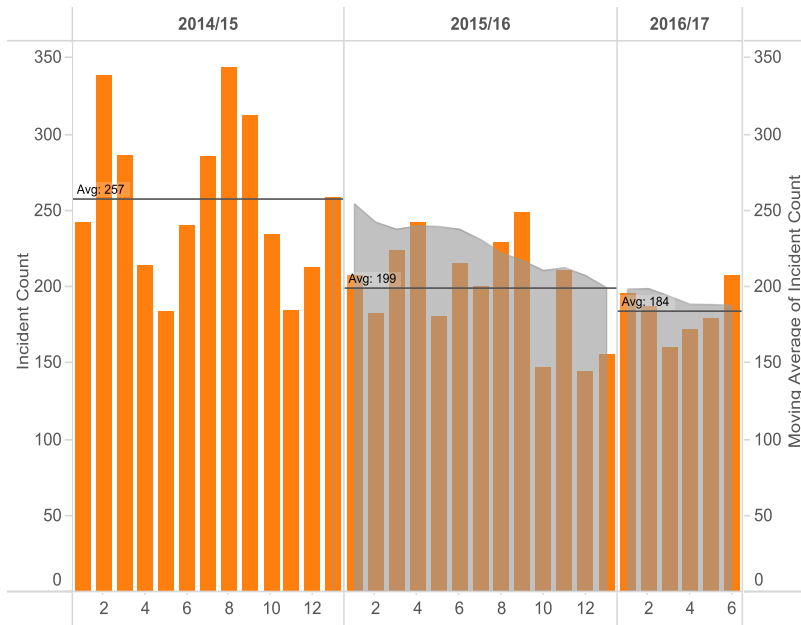


Network Rail East Midlands

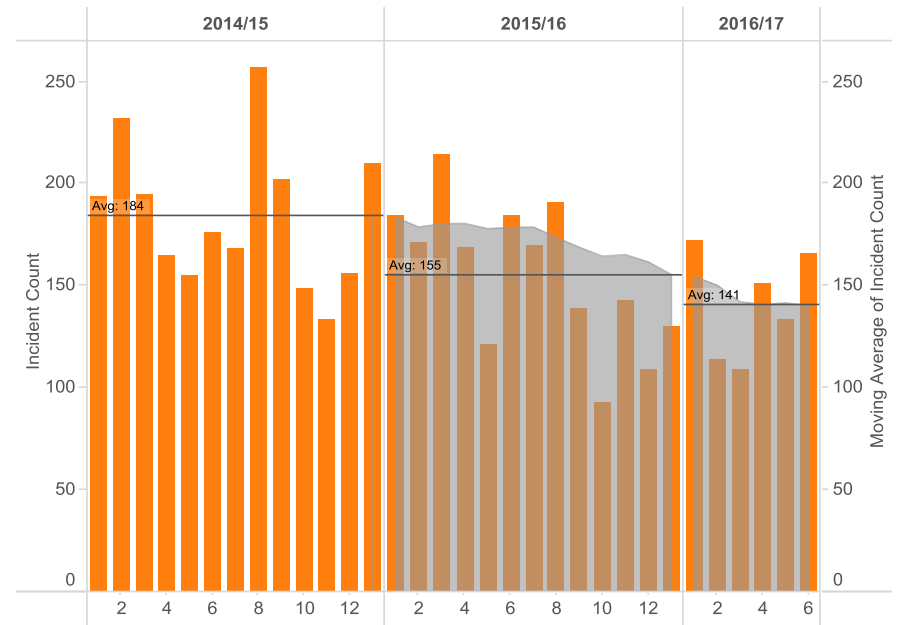
Muz Haque

Joint Head of Performance

Overview – NR ADEM incident count



GTR services



EMT services

Sustained reduction in incident count

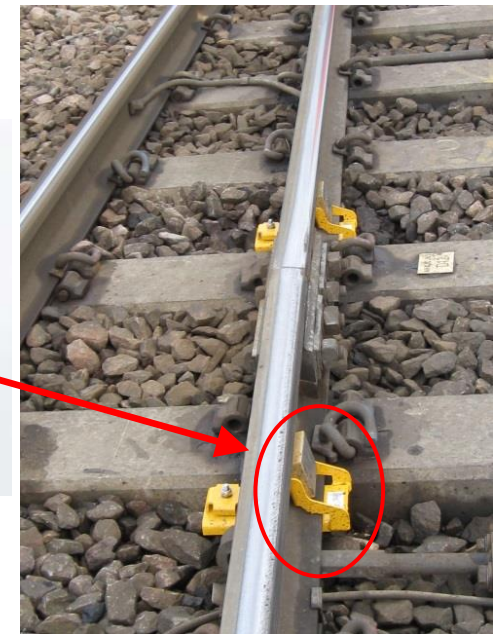
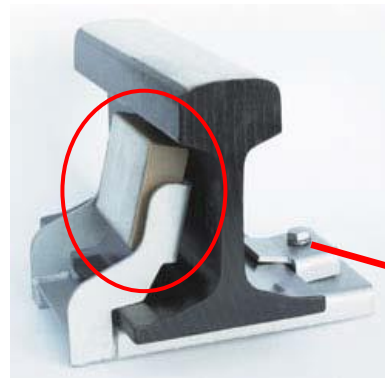
No incident = Zero impact to customers

Asset Improvements

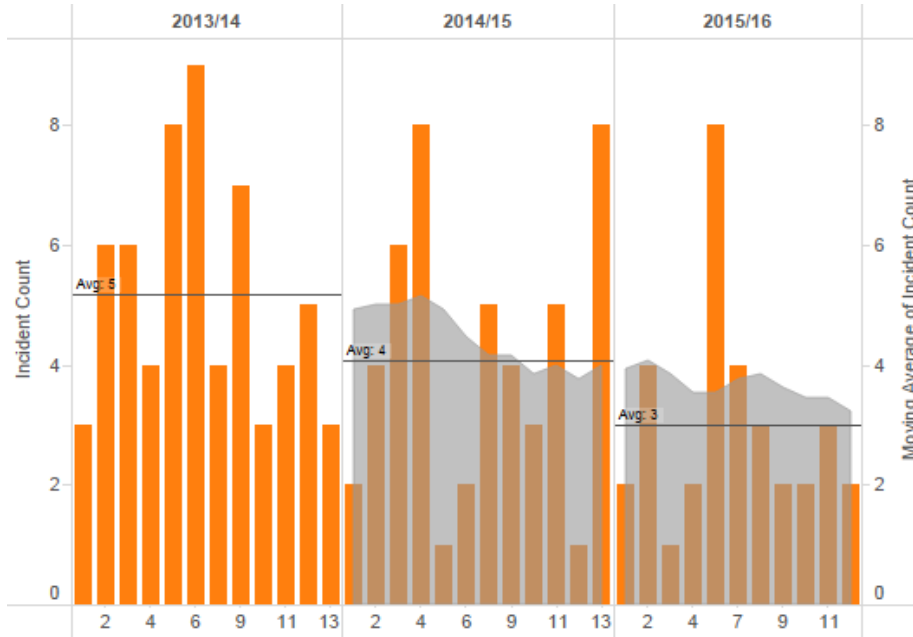
Track Circuit Failures

- **£475,000 investment within the critical assets plan 2016/17 for the Bedford Delivery Unit**
- **£1.04 million minor works investment across the Bedford Delivery Unit in 2016/17**

- Replace all DC Track Circuit Fuses (1200+) to mitigate against future failure
- Fitting 50 particle magnets to reduce build up of metal filings at joints
- Track Circuit cable upgrades between Bedford & Sharnbrook



OLE Failures



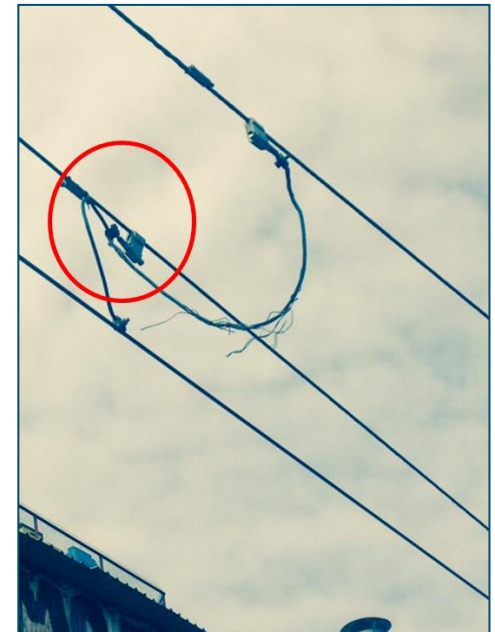
OLE Defects

- 5000 OLE defects removed through additional investment during 2014/15 and 2015/16, which in turn has been a key factor in the prevention of c. 5 de-wirements.



Insulator Replacement Programme

- Significant investment in Elstree and Belsize tunnels as part of the with insulator replacement programme.



Southern Network Improvement Measures

- During September the transport secretary announced a package of measures including a £20 million fund and the appointment of one of Britain's most experienced rail industry figures to help get the service back running as it should.
- The Department for Transport will work with Network Rail and GTR to improve services in this area.
- Some already specified benefits of the £20 million include:
 - £2 million to be spent on more rapid response teams to fix faults more quickly, located close to known hotspots
 - £2.5 million to be spent on accelerated train maintenance
 - £0.8 million investment in extra signal supervisors to keep trains moving across the network
 - £0.9 million investment in a series of measures to minimise the impact of bridge strikes

MML Electrification

MML Electrification

Estimate Item	Quants
STK to be electrified	639
OLE Masts	12,500
Grid Supply Points	4
Distribution Points	24
Complex Area Schemes	7 Locations Belper Toadmoor Sheffield Nottingham Leicester Claycross Bradway
Structure Clearance Schemes	26 Track 82 Structures
Parapet Upgrades	66
Signal Alterations	215



Kettering to Corby / Bedford to Kettering

- Upgrades to track, signalling and associated infrastructure between Kettering/Corby & Bedford/Kettering will improve the capability of the line and create additional capacity – more trains, more seats



- 6 week blockade as part of the Kettering – Corby project delivered to time last weekend

Seasonal Preparation

Autumn

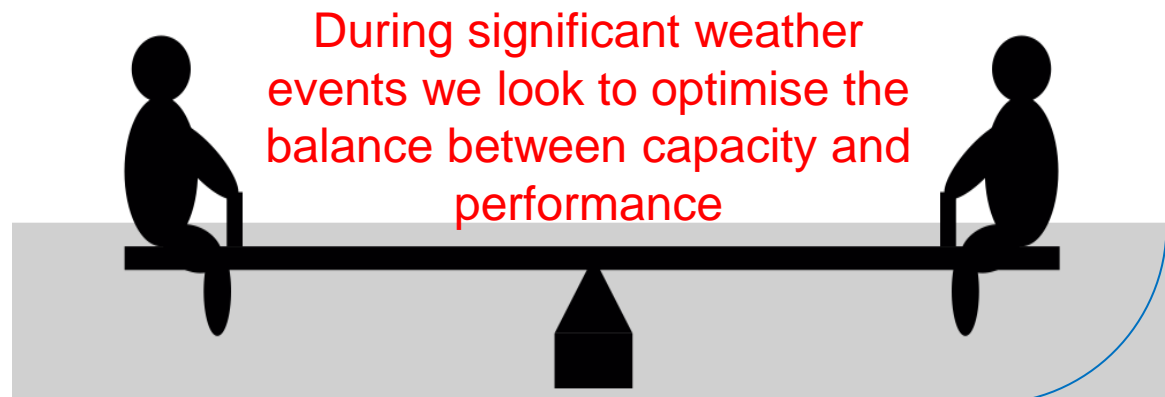
- Daily run of the Railhead Treatment Train until December
- Dedicated two-man leaf fall team based at Luton

- Use of daily adhesion forecast along side daily inspection sites
- On track Traction Gel Applicators



Winter

- Points heaters at key junctions for use in frost or low level snowy conditions
- For significant levels of snow and when junctions can't be utilised a Black Day timetable is implemented to segregate services and keep services moving
- Use of Remote Condition Monitoring (RCM) for points heating to gain immediate knowledge of failed or degraded assets
- 5 day forecast used to inform need for daily conference and extra resource



Possession Overrun

Belsize Tunnel 24/10/16

Belsize Tunnel Possession Overrun 24/10

- A significant contributor to the overrun was the dust experienced in the tunnel when digging into the ballast.
- Most ballast digs are done outside where the ground tends to be damp once digging down, likewise most tunnels are damp environments. This was an exception to that rule.
- Dust mitigations in line with expectations were in place but proved inadequate.
- Works had to be stopped on health and safety grounds.
- The scope of future works has been amended in line with the issues experienced.

